

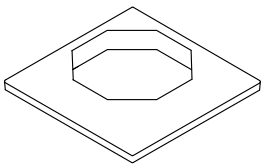
Hale Outdoor Kitchen Garden Fireplace

SCHIEDEL

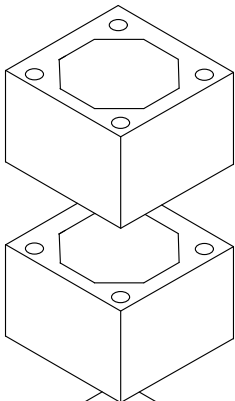
Build, rendering, firebricks and accessories

Hale Outdoor Kitchen Garden Fireplace

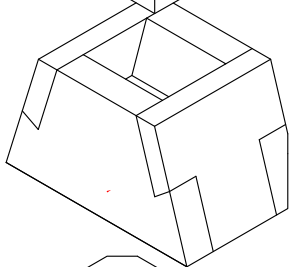
Capping



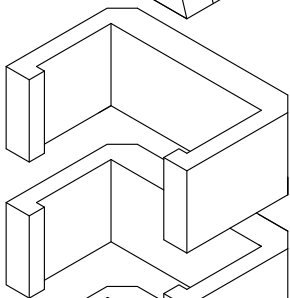
Chimney
blocks x 2



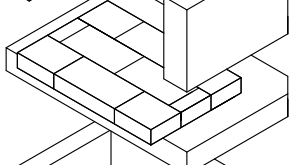
Gather
front, back
and sides
x 4



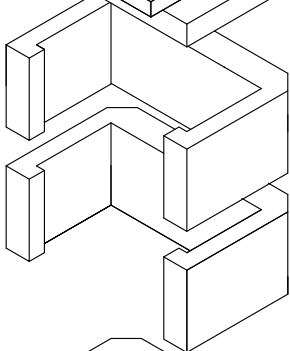
Frame
section
x 2



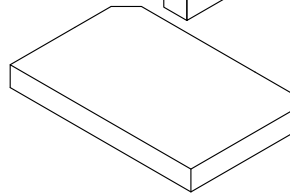
Base
plate x 1
Firebricks



Frame
section
x 2

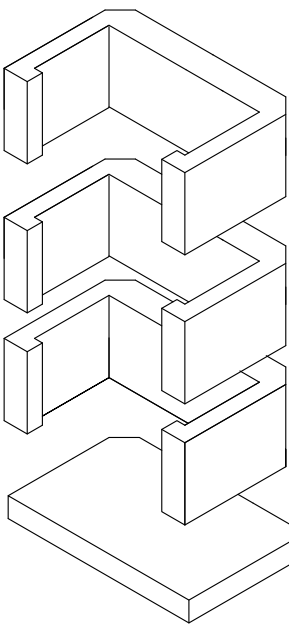


Base
plate x 1



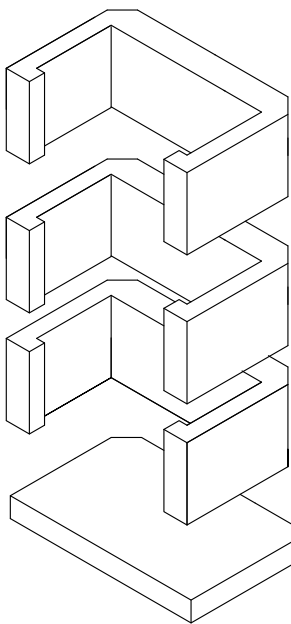
Right hand kit example. Note that this is available in right hand side and left hand side. Instructions are very similar for both designs.

Frame
section
x 3



Base
plate x 1

Frame
section
x 3

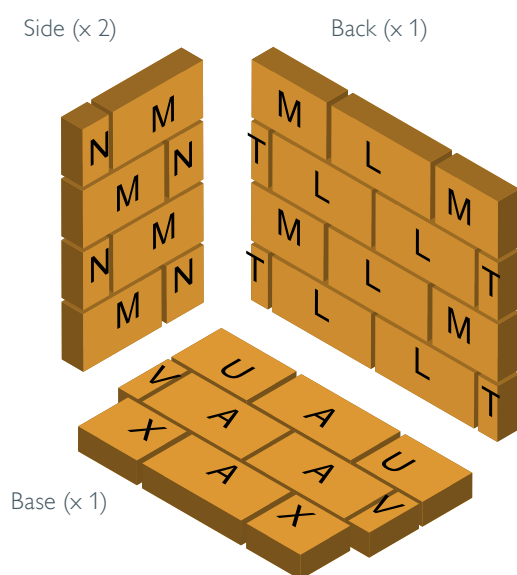


Base
plate x 1

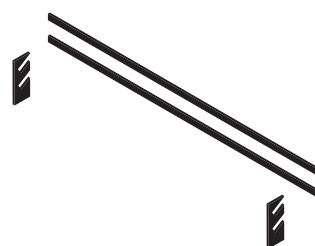
The Hale Outdoor Kitchen Garden Fireplace model comes complete with the following components:

- 1 bag of lip glue adhesive (for pumice components)
- 1 bag of Calderys fire brick mortar
- 1 bag of render
- 1 log retainer kit (2 metal bars + 2 fixing brackets)
- 1x grill and fixing brackets

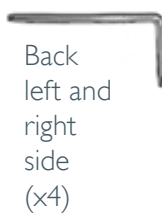
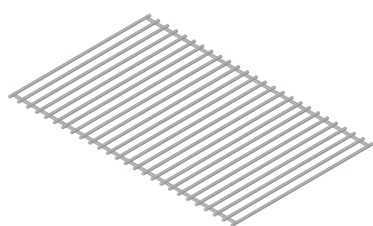
Fire brick diagram and parts (see page 6 for more details)



Log retainer kit (see page 10 for more details)



Grill and fixing brackets



Preparation

The Garden Fire needs to be built onto a firm foundation. It should not be built directly onto decking. Schiedel recommends that a minimum 100mm reinforced concrete base is used to support the structure.

A distance of 100mm should be left between the Garden Fire and any wooden or other combustible material.

Instructions - Log store and firechest (Step 1)



Position the base plate onto a solid surface - recommend 100mm thick reinforced concrete. Bed the two Frame sections using the supplied lip glue adhesive. Check each stage is level.



Mix lip glue jointing adhesive as per instructions on the bag. Apply 15-20mm beads using the supplied application bag as shown in the picture above.



Apply lip glue around the top of the frame section and then press the base plate down into position. Check that it is level.



Glue on the next two frame sections

Instructions - Gather unit (Step 2)



Apply lip glue to the top layer and then press the front and rear sections of the gather into place.



Apply lip glue to the joints on the sides of the front and rear panels of the gather.



Press the side panels of the gather into place.



The fireplace with the gather unit should resemble the image above.



Apply a layer of lip glue around the top of the first block and then press the second block into place. Ensure the top is level and clean off any excess glue.



Apply a layer of glue on the 2 x chimney blocks. Check all is level and wipe off excess glue.

Instructions - Capping (Step 3)



Apply lip glue to the top of the final chimney block.



Position the capping over the glue and central.



Push and adjust in to place.

Instructions - Side log stores (Step 4)



For the side storage, place the base and then add the three frame sections sections using the supplied lip glue adhesive. Check each stage is level.



Do the same with the adjacent frame sections.



Apply lip glue around the top of the frame section.



Build up to 3 frame sections.



Repeat the process for the adjacent storage. We recommend rendering the Hale before fitting the doors and granite tops

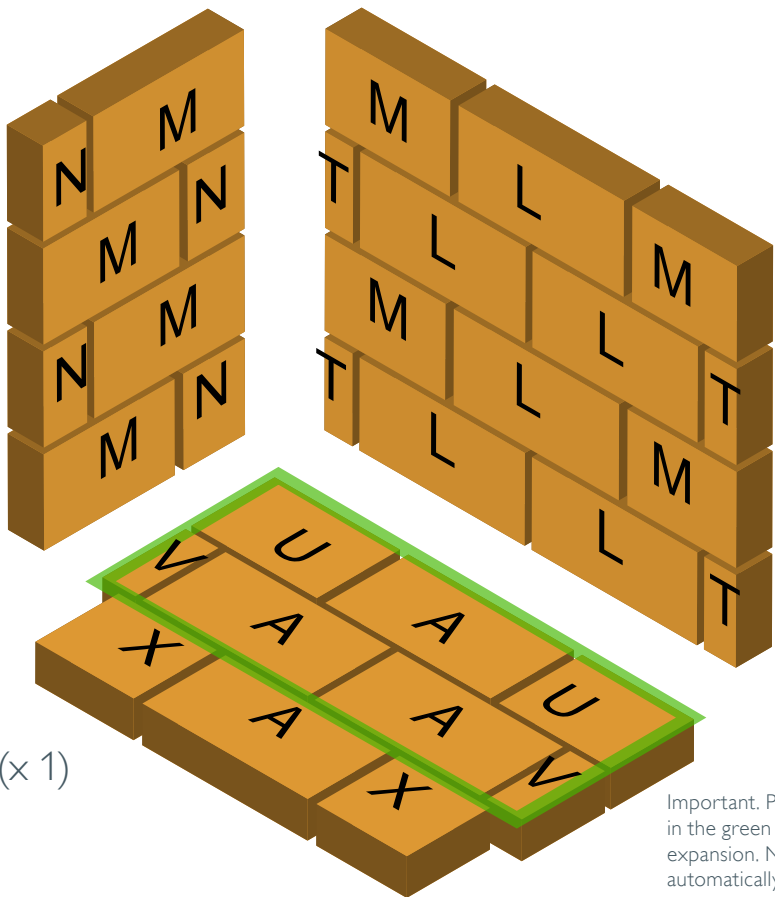
Garden Fireplace firebricks guide

500 model

Side (× 2)

Back (× 1)

Base (× 1)



The finished firechest must be lined with firebricks that are at least 25mm thick on the sides and 50mm thick on the back and bottom. The firebricks should be either butt jointed or pointed and adhered to the pumice elements using firebrick mortar, with the exception of the base firebricks, which should be placed loosely.

The front row of the base bricks may be secured in position with adhesive. To ensure proper adhesion, thoroughly wet the pumice and allow sufficient time for the water to be absorbed. When preparing the firebricks, submerge one in a bucket of water until the surfaces are moist but not dripping.

Follow the mixing instructions for the firebrick mortar and apply a layer of 2-3mm thickness before positioning the firebricks onto the pumice.

Important. Please DO NOT glue the base bricks highlighted in the green area. This is to prevent cracking due to thermal expansion. Normally, the ash from the burnt material will automatically fill the gaps for these loose base bricks and allow for expansion.

Brick	L	W	D
A	230	114	50
L	230	114	25
M	156	114	25
N	78	114	25

Sizes in mm

Brick	L	W	D
T	35	114	25
U	154	114	50
V	35	114	50
X	124	114	50

Note for all models

8mm gap between bricks.

Bedded on 1-3mm thick firebrick mortar

Firebricks to be glued on and pointed with the Calderys firebrick mortar as per enclosed instructions



Front bracket × 4

Back bracket × 4



Prior to gluing the bricks, remember to place the 8 × brackets (2 front and 2 back brackets on each side) supported on the firebricks, before the next row of firebricks are added. These are supports for the grill.

PLEASE NOTE: Firebrick colours will vary in shade to photographs shown in these instructions. This is natural due to the production process.

Instructions - Firebricks and grill supports (Step 5)



Mortar bag - Used for gluing on firebricks and pointing in. Mix as per instructions on the bag



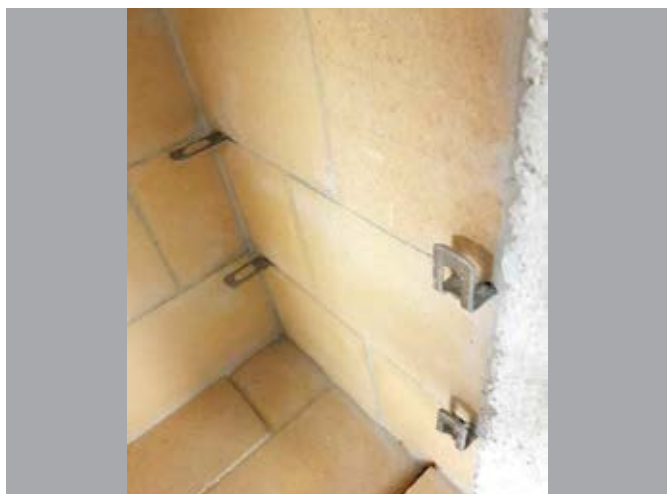
Bed the firebricks on to a 3mm layer of firebrick mortar. Use the tables on the previous page as a guide.



Complete the bottom layer of firebricks, then fasten the rear firebricks in place using the firebrick mortar. Use a tile spacer to keep an 8mm gap.



Once the bottom and rear firebricks are in place, fasten the side bricks in position using the firebrick mortar. Use a tile spacer to keep an 8mm gap. During the first and second level, you must slot in the grill supports as shown in the next step →



Inset grill support front and back brackets prior to fitting the firebricks on the side walls. These can be supported on the firebrick layer as shown.



Use the mortar mix to point up the joints between the firebricks once they are all in position. Clean off excess mortar.

Instructions - Log retainer (Step 6)



Drill 2 x 12mm diameter holes in the front row of the firebricks. Push log retainer holders in place.



Then push fit the log retainer bars into the slots.

Instructions - Rendering (Step 7)

Render plaster must be mixed, applied, and smoothed by a skilled professional. **Please note: As a heat-resistant material, it necessitates greater care and pressure during application compared to conventional plaster, which is typically smoother.**

Cracking and bubbling in the render often results from moisture being trapped behind it. This issue can stem from inadequate surface preparation, incorrect mixing ratios, application in unsuitable weather conditions (such as high humidity), or applying the render to a damp surface. When moisture is trapped, it can expand and form bubbles as it attempts to escape. Key contributors to bubbling on concrete surfaces include an excessive amount of water in the render mix. Overly watery mixtures can weaken the bond and lead to moisture entrapment, resulting in bubbling during the drying process.

Additionally, insufficient substrate preparation, such as failing to clean or prime the concrete surface before applying the render, can result in poor adhesion and the formation of air pockets.

Render plaster is intended for a single coat application; if additional coats are necessary, more render must be purchased.



Burn off the fibres on external surface before rendering.



Mix the render as per the instructions



Render the surface areas.



Ensure the edges are smooth and wait to dry.



Instructions - Wood doors (Step 8)



Align the hinge to the logstore, ensuring the door is below the top of the logstore (a 5mm gap is fine).



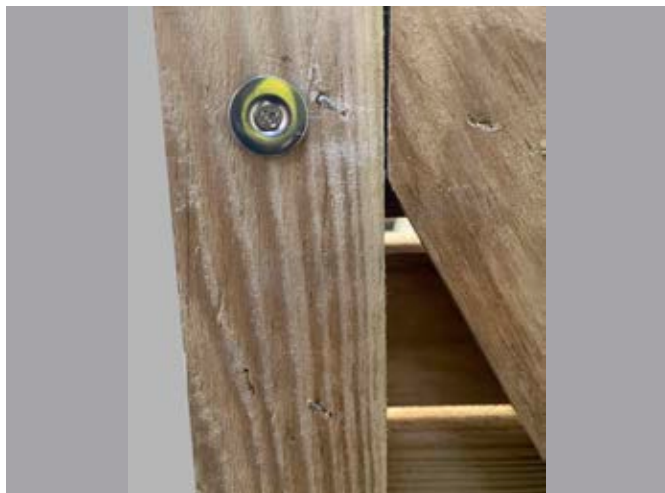
Secure the hinge to the pumice logstore with the screws provided.



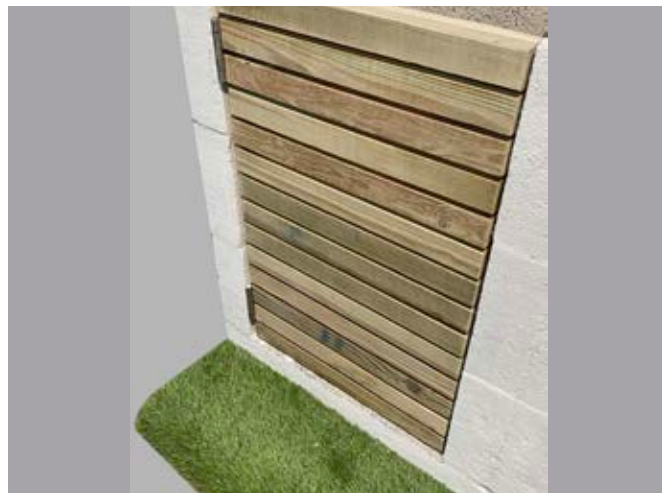
Attach the magnetic latch to the inside of the logstore with the screws provided.



Mark with a pencil the end of the magnetic latch on the door.



Attach the metal ring to the door.



Test that the door closes and opens correctly. Adjust where needed.

ATTACHING THE BACK PANEL UPRIGHT SUPPORT

- Take two 8 x 80mm hammer fit fixings and position them per upright support.
- Locate the designated points on the back panel where the fixings will be inserted.
- Using an 8mm drill bit, create pilot holes into the blockwork at these points.
- Place the back supports against the pilot holes, ensuring proper alignment.
- Drill through the pre-drilled pilot holes on the back supports into the blockwork.
- Insert the fixings into the wood and secure them into the blockwork by hammering.
- To ensure a tight fit, utilize an impact driver or electric screwdriver to tighten the fixings.

ATTACHING THE SIDE PANEL UPRIGHT SUPPORT

- Take two 8 x 60mm hammer fit fixings and position them per upright support.
- Locate the designated points on the back panel where the fixings will be inserted.
- Using an 8mm drill bit, create pilot holes into the blockwork at these points.
- Place the back supports against the pilot holes, ensuring proper alignment.
- Drill through the pre-drilled pilot holes on the back supports into the blockwork.
- Insert the fixings into the wood and secure them into the blockwork by hammering.
- To ensure a tight fit, utilize an impact driver or electric screwdriver to tighten the fixings.

DOOR HINGE INSTALLATION

- For each hinge, prepare four Rawlplugs, eight for each of the doors.
- Locate the center of each hole on the door where the hinges will be positioned.
- Drill 7mm pilot holes at these marked points, ensuring a depth of 30mm.
- Insert the Rawlplugs into the pilot holes by hammering them in.
- Align the door with the hinges fully extended and position it accordingly.
- Securely attach the hinges to the blockwork by screwing them in place.

NOTE: It is important to exercise caution and follow proper safety guidelines while carrying out the installation process.

PUSH LATCH INSTALLATION

- For the block with the Push Latch on, prepare four rawlplugs per block.
- Locate the center of each hole on the block and mark.
- Drill 7mm pilot holes at these marked points, ensuring a depth of 40mm.
- Insert the Rawlplugs into the pilot holes by hammering them in.
- Align the block with the holes.
- Securely attach the hinges to the blockwork by screwing them in place with the 6 x 60mm screws provided.
- Mark where the push latch meets the door and attach the small metal washer with the screw provided.

NOTE: It is important to exercise caution and follow proper safety guidelines while carrying out the installation process

Instructions - table top and wood background (Step 9)



Lay the granite surface on a bed of lip glue.



Ensure that the granite is level.



Place the second granite surface on the logstore and ensure these are level.



Place the side wooden panel on top of the granite. Fix with screws provided, flush to the back.



Re-fix the two long supports to the back panel, as shown above. Then fix the back wooden panel to the log stores with the screws provided.



Attach the bottom metal bracket to the side and back panels.

Instructions - Wood background (Step 10)



Attach the top metal bracket to the side and back panels.



You have now completed the build :) Enjoy cooking on the Outdoor Kitchen.

After completion

Once build and rendering is complete, please do not use for at least 72 hours after completion.

On first use, always light a small fire first and increase the size of the fire once the firechest has fully dried out. Only use dried and seasoned wood for the fire. Do not burn plastic or waste products.

Guarantee

INTRODUCTION

We are confident in our products and so offer you (the owner) a generous guarantee in relation to the Garden Fireplace.

Provided that you comply in full with your responsibilities (below) and subject to the Small Print (below), we guarantee to you that the fireplace will be free from defects on delivery to you via pallet.

Any blocks or firebricks which are cracked or damaged at the time of delivery will be replaced free of charge.

This guarantee does not cover any major impact to the fireplace (such as wear and tear, wind damage) once the item has been constructed and rendered.

As the fireplace is an outdoor product, standard wear and tear will occur and any structural damage would have to be investigated. In the unlikely event that the fireplace becomes defective during the guarantee period, we will provide replacement component parts and render material free of charge.

YOUR RESPONSIBILITIES

To benefit from our guarantee, this product will be registered to the address where we delivered it. Please inform us if the fireplace was installed elsewhere.

HOW TO CLAIM UNDER YOUR GUARANTEE

To claim under your guarantee, please email us at sales.uk@schiedel.com. You will be asked to provide proof that you have complied in full with the terms of usage of the fireplace and that only dried and seasoned firewood has been used as a fuel.

If you are an installer / builder

If you are a regular builder of our Garden Fireplaces, then please get in touch with us. We are looking for competent builders throughout the UK and Republic of Ireland to promote as "recommended builders" in certain areas.

Builders are able to benefit from joining our Installer Loyalty scheme with points awarded for installations, which can then be redeemed for vouchers. Please see details at www.schiedelrewards.co.uk.

Also from Schiedel: The Celsius, an all-in-one stove and volcanic chimney package

The same material used in the Garden Fireplace; formed from pumice from the Hekla Volcano



Schiedel Isokern

Unit 8/9 Block A, Holton Road,
Holton Heath Industrial Est., Poole
BH16 6LG
T +44 1202 861650

sales.uk@schiedel.com
www.schiedel.com/uk

The Celsius system is a DEFRA exempt, A+ rated system, which allows zero distance to combustibles.



The ideal stove and chimney combined package for any house development, log cabin, conservatory or outhouse.

Get in touch for more information.

Follow us on Social Media @SchiedelUK



A **stañdard**
INDUSTRIES COMPANY