

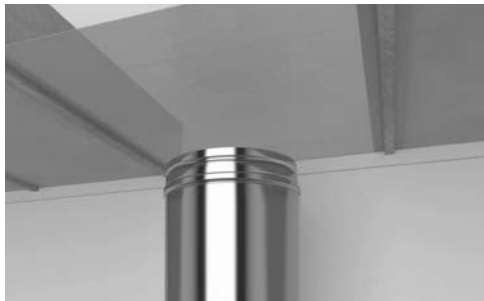
SAFE
INSTALLATION

Schiedel Protect Box

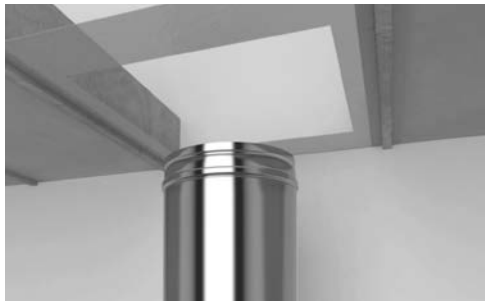
Installation Instructions

SCHIEDEL

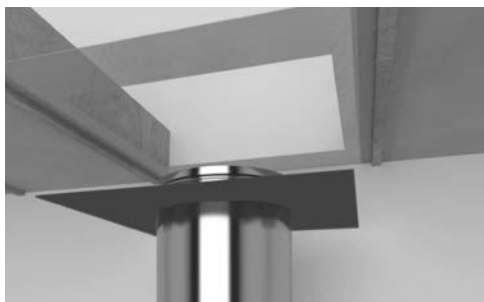
Installation Instructions



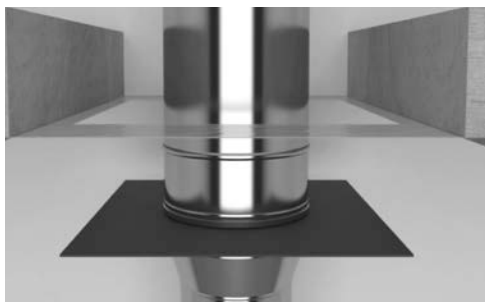
Existing vapor barrier.



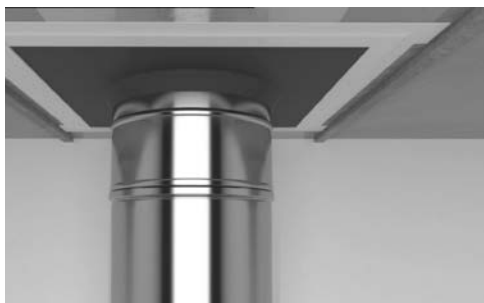
Square section cut out of barrier.



Silicone seal pulled down onto outer bead of pipe.



Silicone seal pulled up over joint until level with barrier.



Silicone seal is attached to the vapour barrier supplied with each sealing kit.

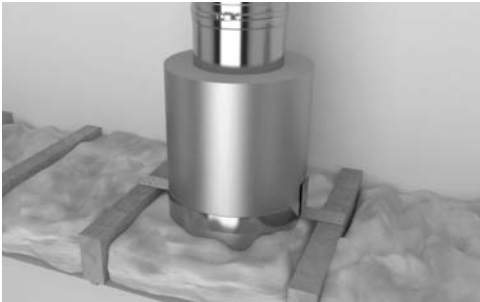
Installation Instructions



Protect Box lowered into position and fastened securely to the joists.



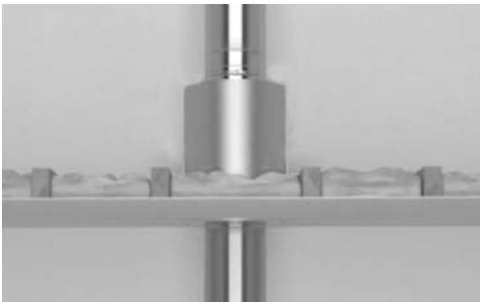
Additional components installed and secured with locking bands.



Insulation replaced around Protect Box.



2-piece fire stop plate attached securely to joists.



Ready!



SCHIEDEL

Schiedel Chimney Systems Ltd.

Crowther Estate

Washington

Tyne & Wear NE38 0AQ

Tel. +44 (0)191 416 1150

sales.uk@schiedel.com | www.schiedel.com/uk

A sta^hndard
INDUSTRIES COMPANY