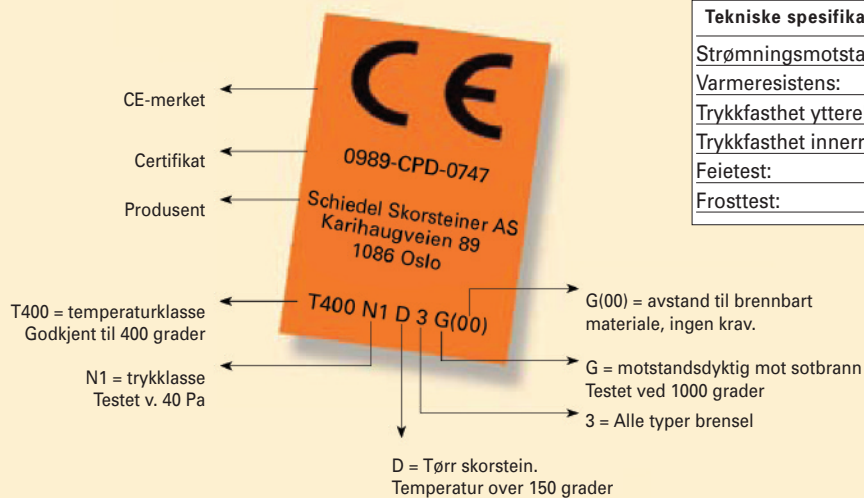
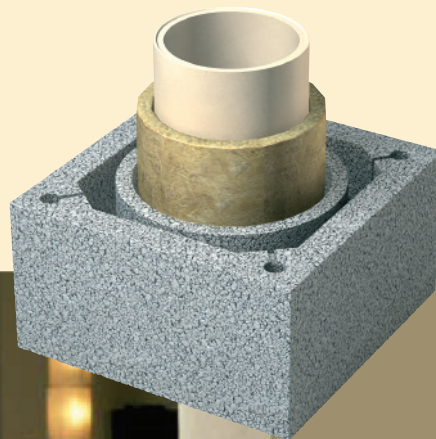


Her er din komplette Solid Vent pipe



Tekniske spesifikasjoner for Schiedel Solid Vent	
Strømningsmotstand:	0,0015 m.
Varmeresistens:	0,465 m ² K/W
Trykkfasthet ytterelement:	5,5 Mpa.
Trykkfasthet innerrør:	7 Mpa.
Feietest:	OK
Frosttest:	Skorstein utendørs skal overflatebehandles